



PARK CITY SURGICAL AND MEDICAL PLAZA  
42

PARKING LOT J  
(SHEET 8)

SIDEWINDER DRIVE

PARKING LOT C  
(SHEET 4)

NEW CLAIM CONDOMINIUMS

PARKING LOT D  
(SHEET 4)

MARRIOTT HOTEL

CARRIAGE HOUSE CONDOMINIUMS

PARKING LOT E  
(SHEET 5)

PARKING LOT K  
(SHEETS 5 & 6)

PARKING LOT H  
(SHEET 6)

PARKING LOT F  
(SHEET 5)

PARKING LOT G  
(SHEET 6)

PROSPECTOR AVENUE

STATE HIGHWAY 248

SIDEWINDER DRIVE

BONANZA DRIVE

PROSPECTOR AVENUE

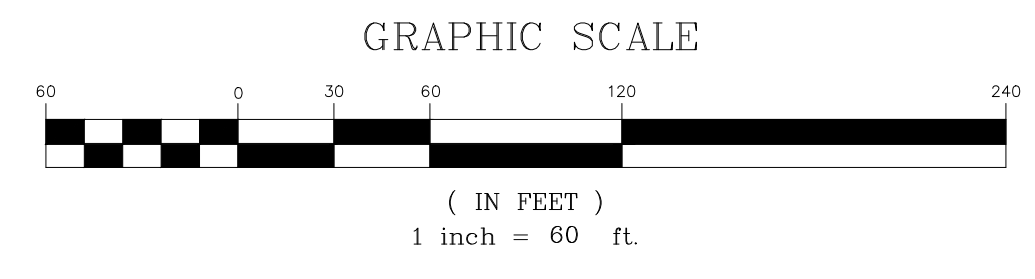
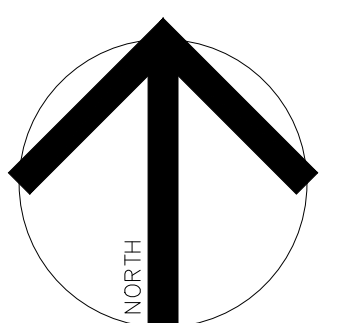
POISON CREEK LANE

GOLD DUST LANE

43  
2060

44

45B



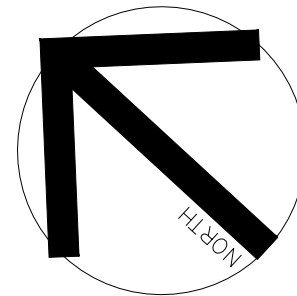
**LEGEND**

- BUILDING
- PROPERTY LINE
- ROAD CENTERLINE
- CURB & GUTTER
- PARKING STRIPES
- AGREEMENT ON FILE

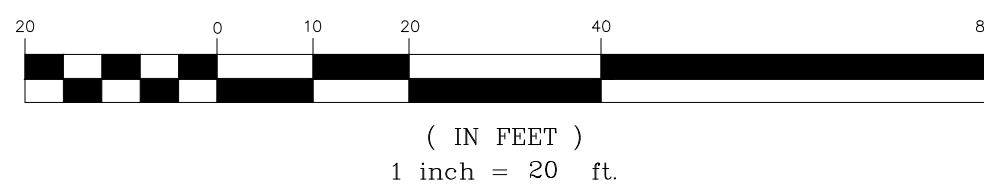
**SHEET INDEX**

- SHEET 1 COVER SHEET
- SHEET 2 PARKING LOT A
- SHEET 3 PARKING LOT B
- SHEET 4 PARKING LOTS C & D
- SHEET 5 PARKING LOTS E, F & K
- SHEET 6 PARKING LOTS G & H
- SHEET 7 PARKING LOT I
- SHEET 8 PARKING LOT J

<p><b>OVERALL EXISTING CONDITIONS PROSPECTOR SQUARE P.O.A.</b></p>							
<p>REVISIONS</p> <table border="1" style="width: 100%; border-collapse: collapse;"> <thead> <tr> <th>DATE</th> <th>BY</th> <th>COMMENTS</th> </tr> </thead> <tbody> <tr> <td>10.28.15</td> <td>ADM</td> <td>PARKING LOT F (REPLAT)</td> </tr> </tbody> </table>	DATE	BY	COMMENTS	10.28.15	ADM	PARKING LOT F (REPLAT)	<p>SURVEYED BY: GRW/ADM</p> <p>DRAWN BY: ADM</p> <p>CHECKED BY: GRW/ADM</p>
DATE	BY	COMMENTS					
10.28.15	ADM	PARKING LOT F (REPLAT)					
<p>FOR: PS/OA</p>							
<p>JOB NO. 1002</p>							
<p>PS-OVERALL</p>							
<p>SHEET 1 OF 8</p>							

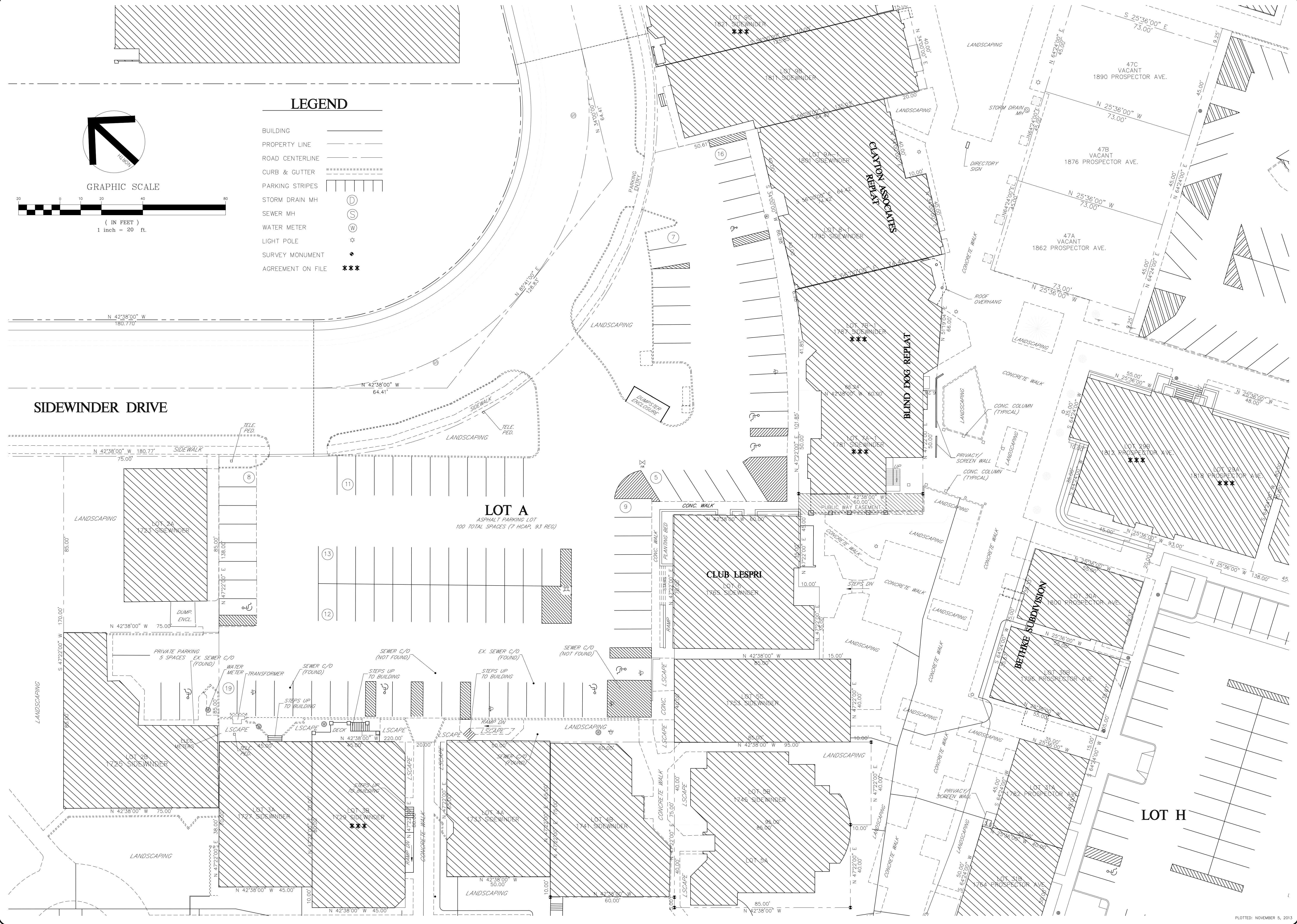


GRAPHIC SCALE



LEGEND

- BUILDING
- PROPERTY LINE
- ROAD CENTERLINE
- CURB & GUTTER
- PARKING STRIPES
- STORM DRAIN MH D
- SEWER MH S
- WATER METER W
- LIGHT POLE \*
- SURVEY MONUMENT +
- AGREEMENT ON FILE \*\*\*



SIDEWINDER DRIVE

LOT A  
ASPHALT PARKING LOT  
100 TOTAL SPACES (7 HCAP, 93 REG)

CLUB LESPRI  
LOT 6  
1765 SIDEWINDER

CLAYTON ASSOCIATES  
REPLAT

BLIND DOG REPLAT

BETHE SUBDIVISION

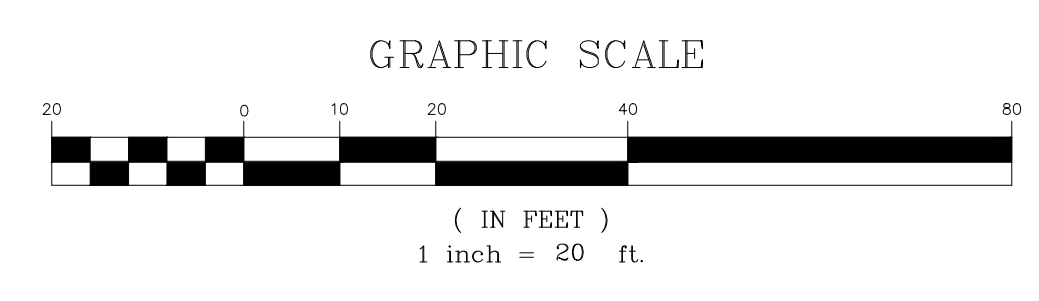
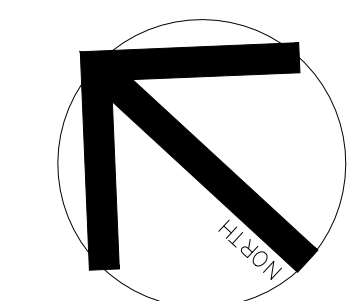
LOT H

OVERALL EXISTING CONDITIONS  
PROSPECTOR SQUARE, PARKING LOT A

REVISIONS	COMMENTS
DATE	BY

SURVEYED BY:  
GRW/ADM  
DRAWN BY:  
ADM  
CHECKED BY:  
GRW/ADM

FOR: **PS/OA**  
JOB NO. **1002**  
DATE: **PS-OVERALL**



**LEGEND**

- BUILDING
- PROPERTY LINE
- ROAD CENTERLINE
- CURB & GUTTER
- PARKING STRIPES
- STORM DRAIN MH
- SEWER MH
- WATER METER
- LIGHT POLE
- SURVEY MONUMENT
- AGREEMENT ON FILE

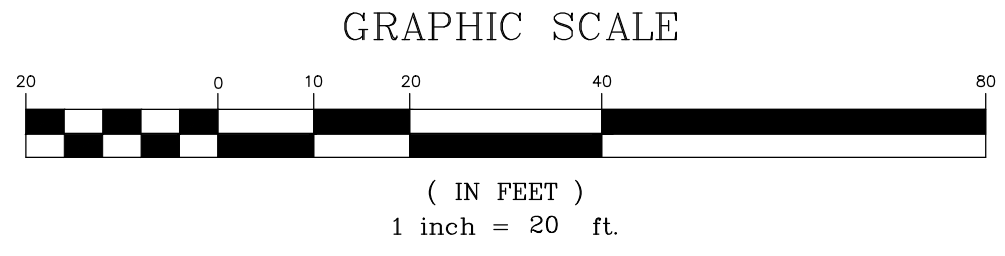
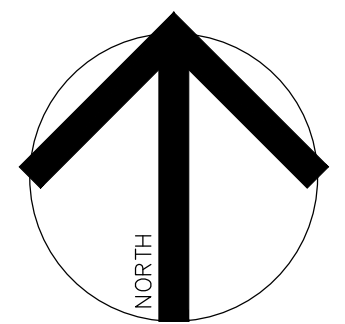
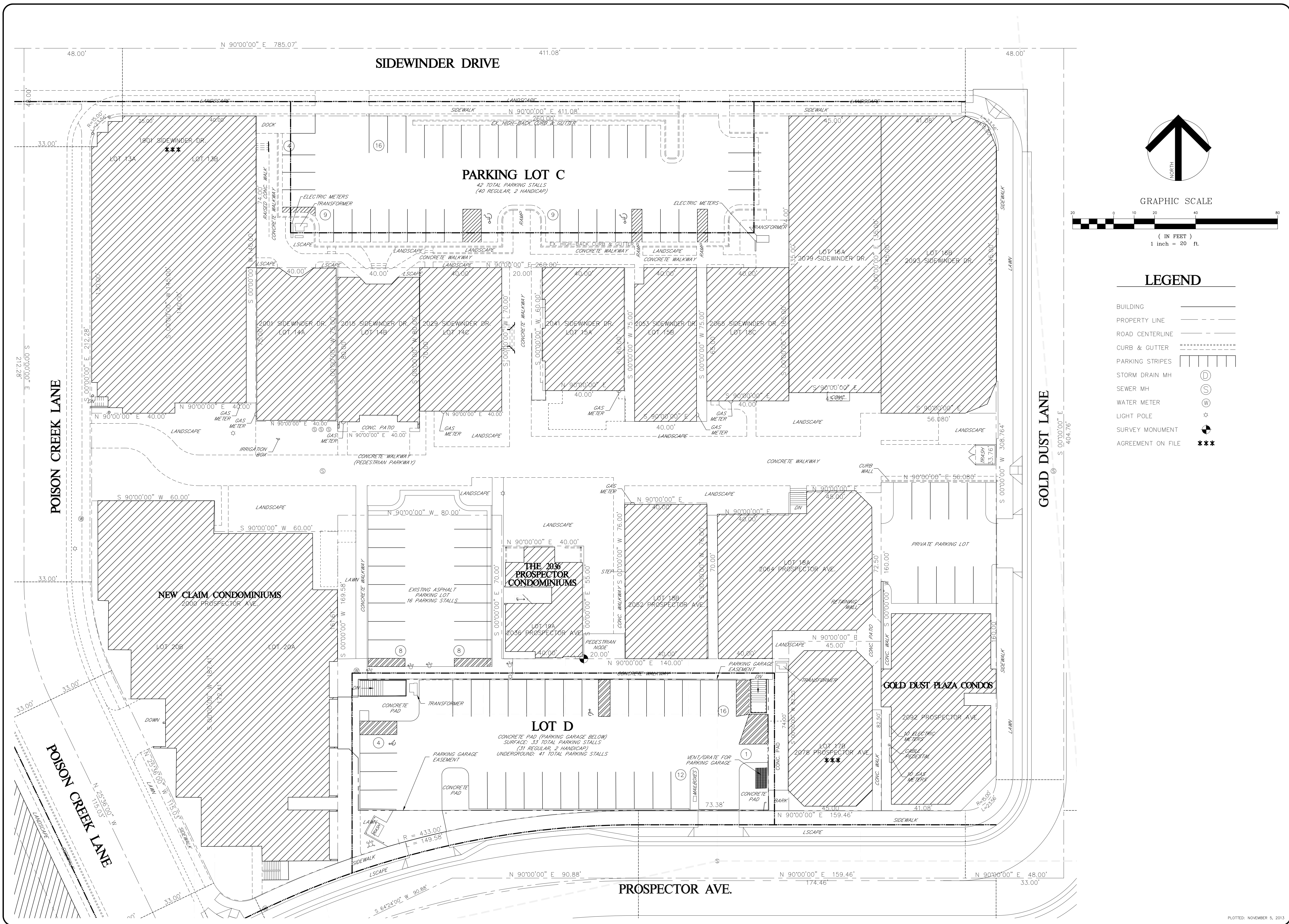
REVISIONS	COMMENTS
DATE	BY

--

SURVEYED BY: GRW/ADM  
DRAWN BY: ADM  
CHECKED BY: GRW/ADM

**OVERALL EXISTING CONDITIONS  
PROSPECTOR SQUARE, PARKING LOT B**

FOR: PS/OA      PS-OVERALL      JOB NO. 1002



**LEGEND**

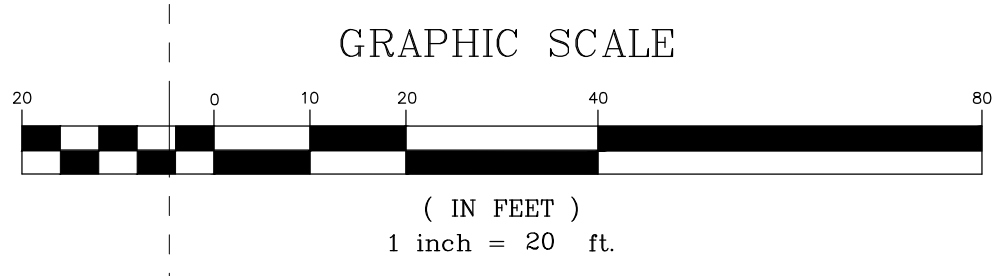
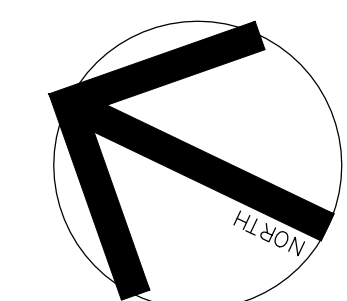
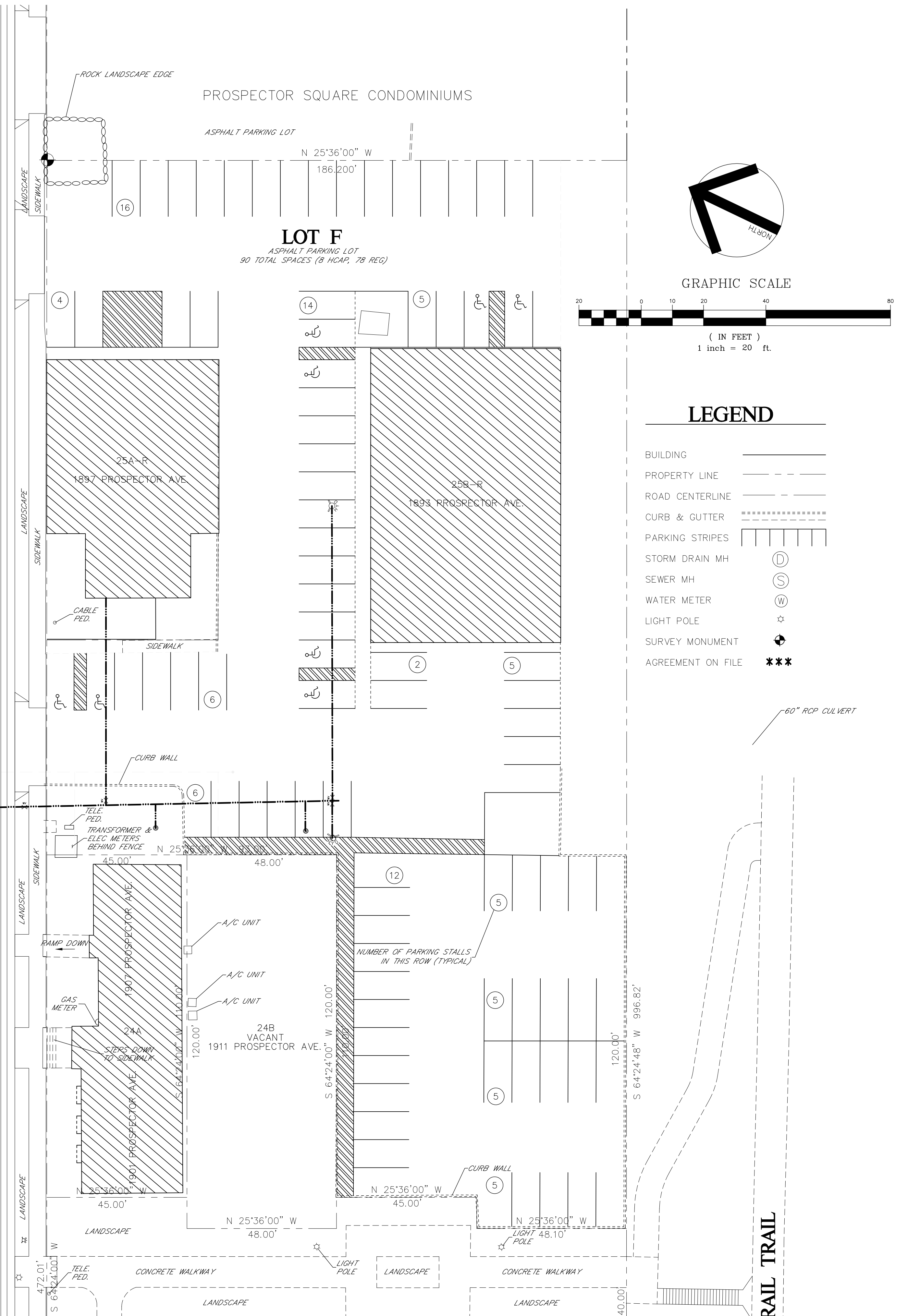
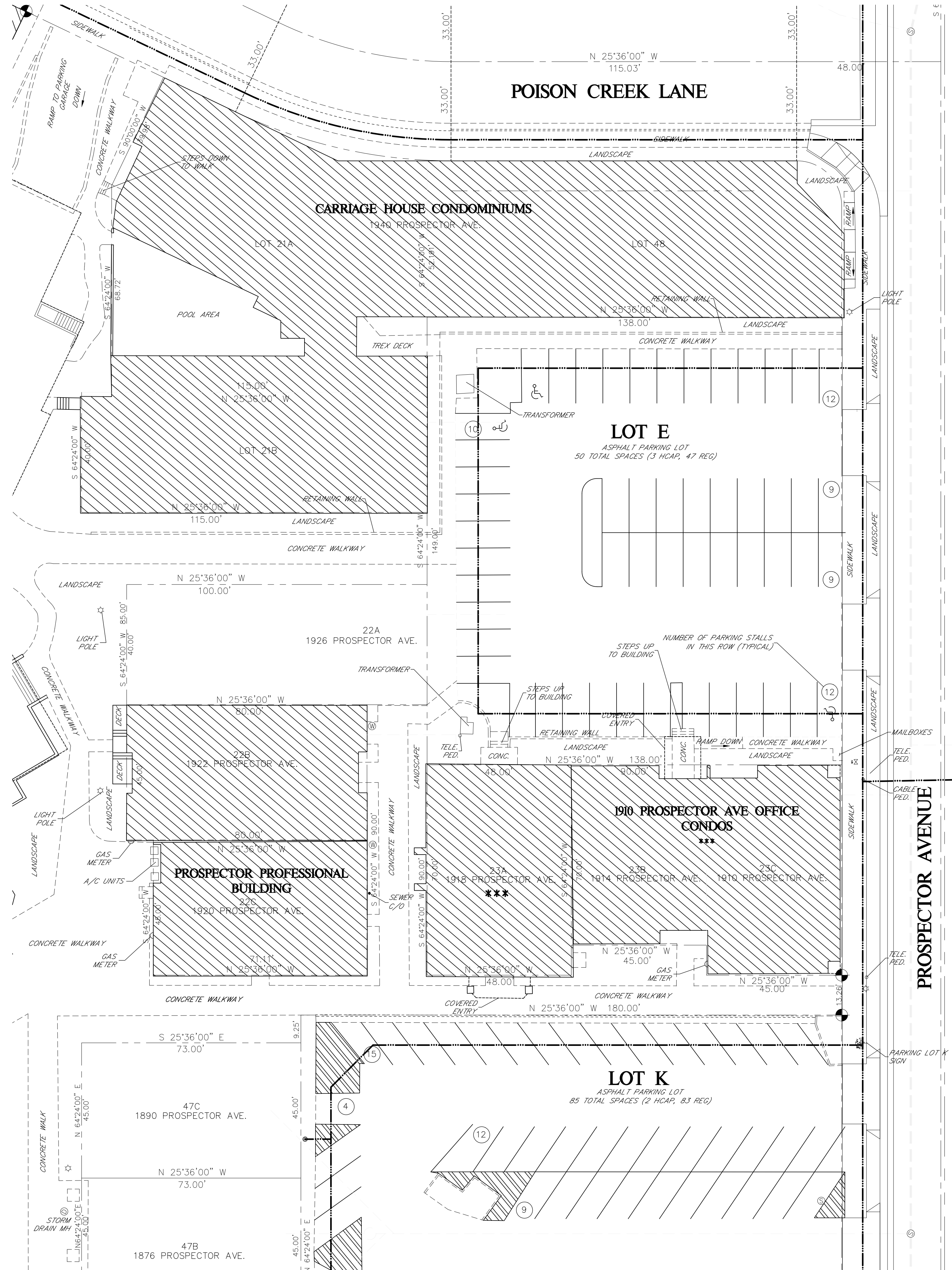
- BUILDING \_\_\_\_\_
- PROPERTY LINE \_\_\_\_\_
- ROAD CENTERLINE \_\_\_\_\_
- CURB & GUTTER \_\_\_\_\_
- PARKING STRIPES \_\_\_\_\_
- STORM DRAIN MH
- SEWER MH
- WATER METER
- LIGHT POLE
- SURVEY MONUMENT
- AGREEMENT ON FILE

REVISIONS	COMMENTS
DATE	BY

SURVEYED BY: GRW/ADM  
 DRAWN BY: ADM  
 CHECKED BY: GRW/ADM

**OVERALL EXISTING CONDITIONS**  
**PROSPECTOR SQUARE, PARKING LOTS C&D**

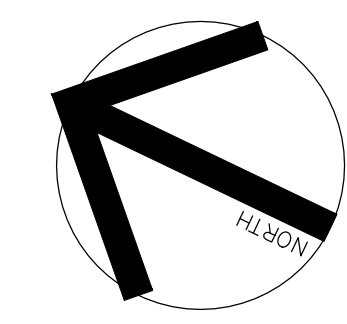
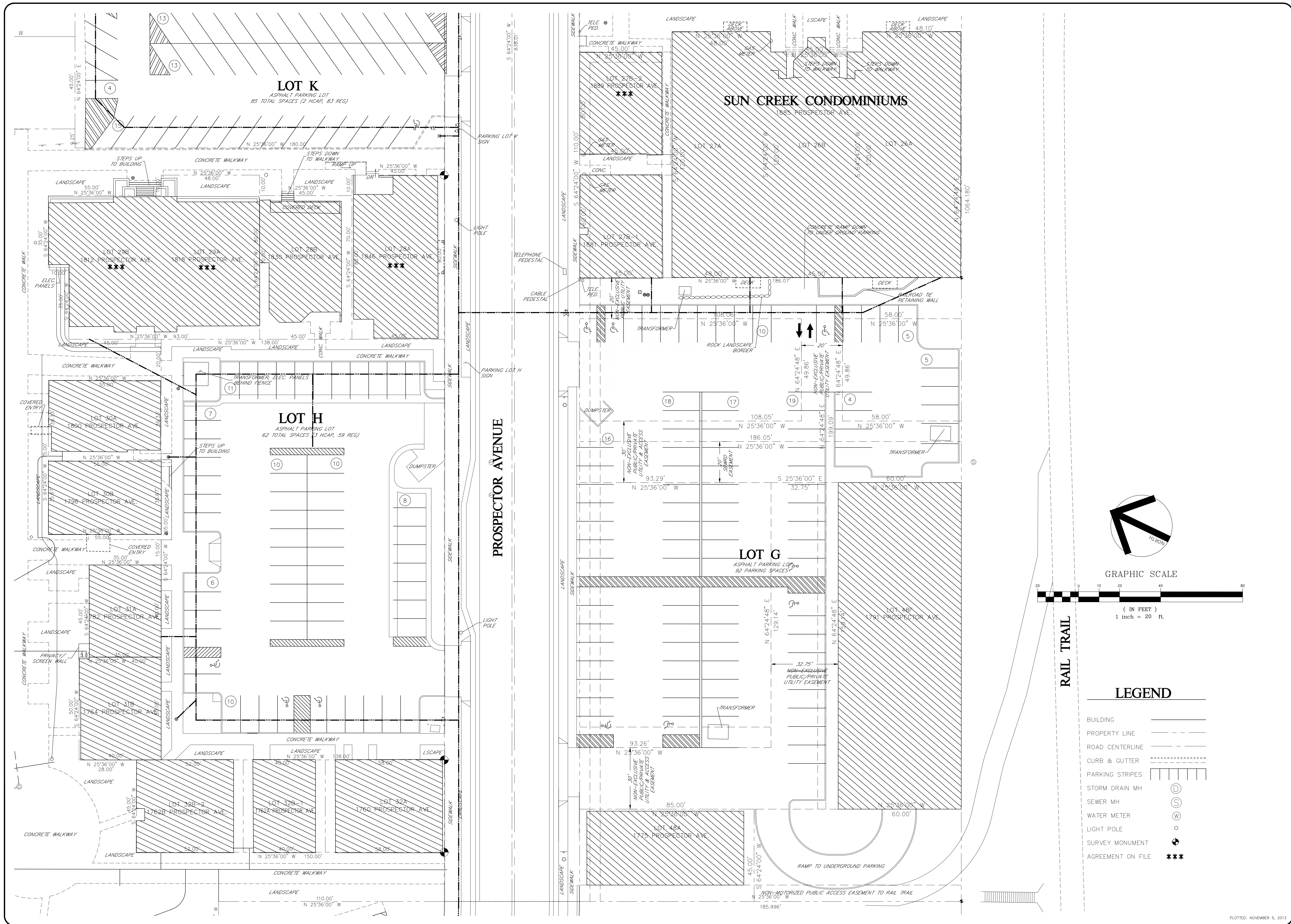
FOR: PS/OA  
 PS-OVERALL  
 JOB NO: 1002



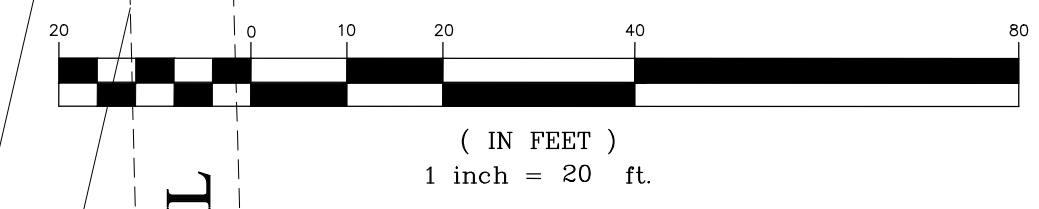
**LEGEND**

- BUILDING
- PROPERTY LINE
- ROAD CENTERLINE
- CURB & GUTTER
- PARKING STRIPES
- STORM DRAIN MH
- SEWER MH
- WATER METER
- LIGHT POLE
- SURVEY MONUMENT
- AGREEMENT ON FILE

<p>REVISIONS</p> <table border="1" style="width: 100%; border-collapse: collapse;"> <thead> <tr> <th>DATE</th> <th>BY</th> <th>COMMENTS</th> </tr> </thead> <tbody> <tr> <td>10.28.15</td> <td>ADM</td> <td>PARKING LOT F (REPLAT)</td> </tr> </tbody> </table>	DATE	BY	COMMENTS	10.28.15	ADM	PARKING LOT F (REPLAT)	<p>SURVEYED BY: GRW/ADM</p> <p>DRAWN BY: ADM</p> <p>CHECKED BY: GRW/ADM</p>
DATE	BY	COMMENTS					
10.28.15	ADM	PARKING LOT F (REPLAT)					
<p>FOR: <b>PS/POA</b></p> <p>JOB NO: <b>1002</b></p> <p>DATE: <b>PS-OVERALL</b></p>							
<p><b>OVERALL EXISTING CONDITIONS</b></p> <p><b>PROSPECTOR SQUARE, PARKING LOTS E, F &amp; K</b></p>							
<p>SHEET 5 OF 8</p>							



GRAPHIC SCALE



**LEGEND**

- BUILDING
- PROPERTY LINE
- ROAD CENTERLINE
- CURB & GUTTER
- PARKING STRIPES
- STORM DRAIN MH
- SEWER MH
- WATER METER
- LIGHT POLE
- SURVEY MONUMENT
- AGREEMENT ON FILE

REVISIONS	COMMENTS
DATE	BY

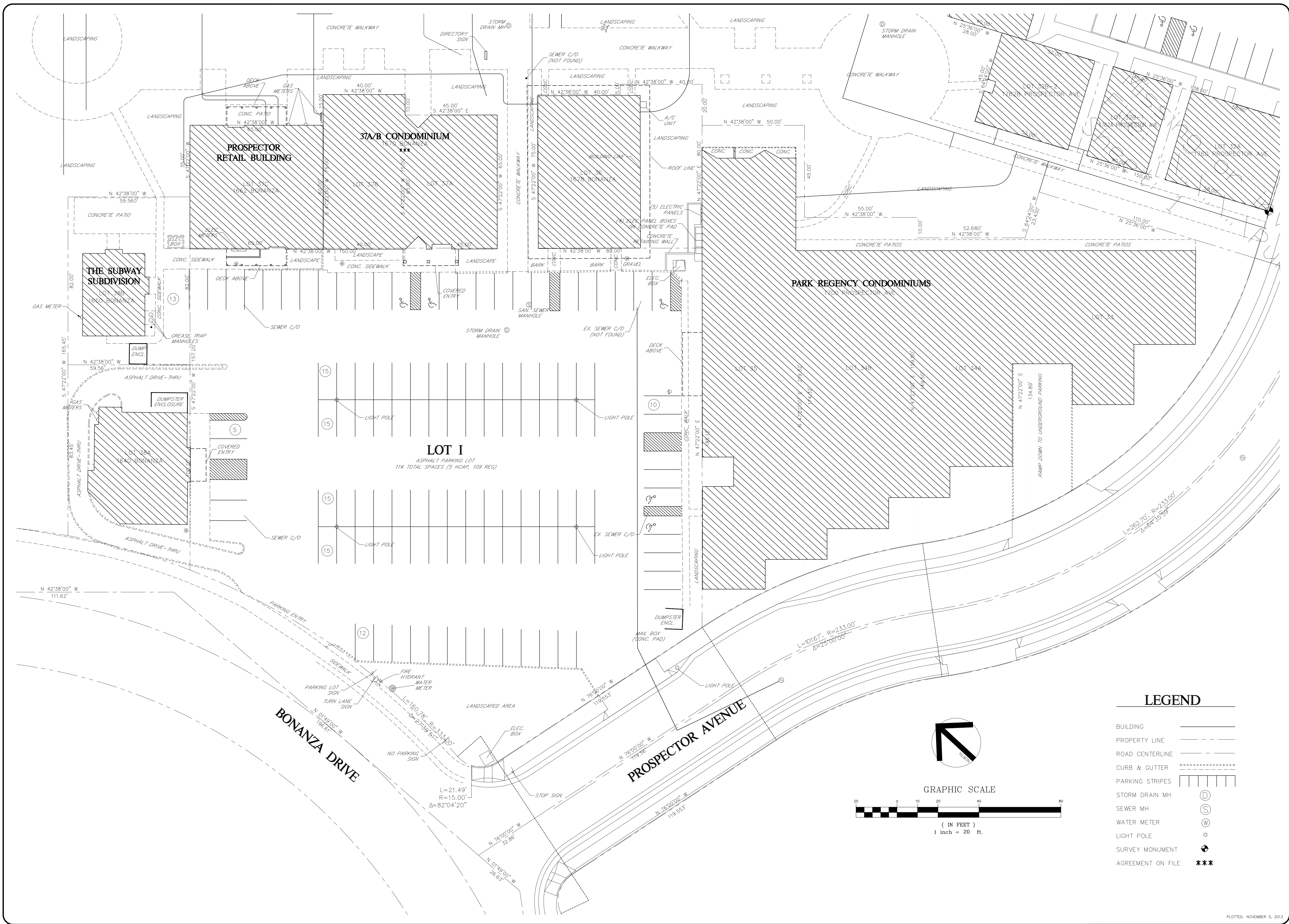
SURVEYED BY:  
GRW/ADM  
DRAWN BY:  
ADM  
CHECKED BY:  
GRW/ADM

**OVERALL EXISTING CONDITIONS**  
**PROSPECTOR SQUARE, PARKING LOTS G & H**

FOR: **PS/OA**

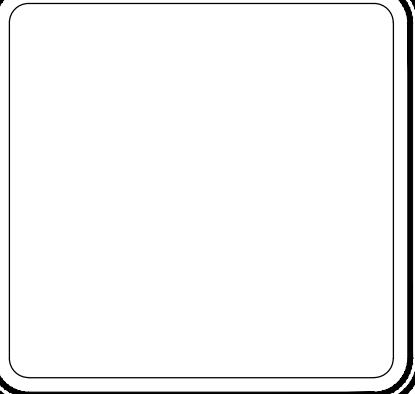
DWG: **PS-OVERALL**

JOB NO: **1002**



**Evergreen Engineering, Inc.**  
 Civil Engineering • Land Surveying • Land Planning  
 1670 Bonanza Drive • Suite 104 • B4680  
 P.O. Box 2861 • Park City • Utah • 84060  
 Phone: (435) 649-9219  
 Email: office@evergreen-eng.com

REVISIONS	COMMENTS
DATE	BY



SURVEYED BY: GRW/ADM  
 DRAWN BY: ADM  
 CHECKED BY: GRW/ADM

**OVERALL EXISTING CONDITIONS**  
**PROSPECTOR SQUARE, PARKING LOT I**

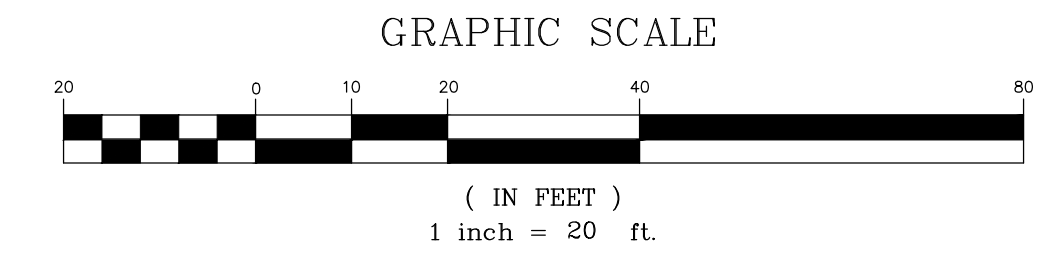
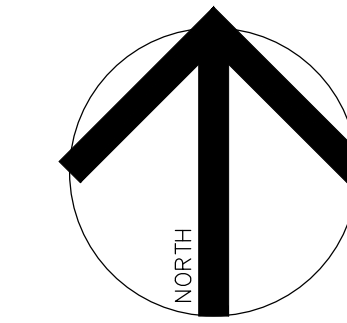
FOR: PS/OA

JOB NO. 1002

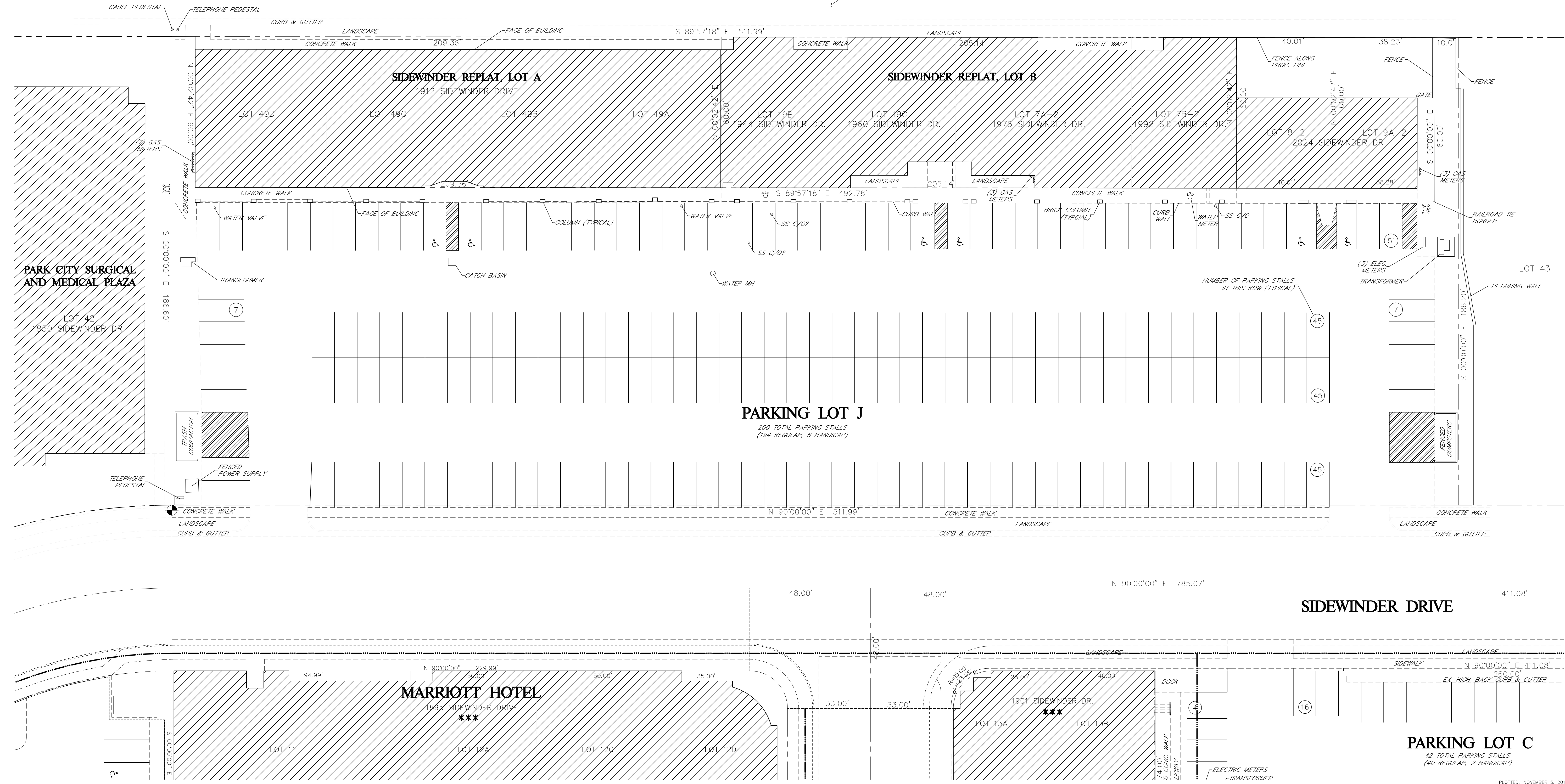
DATE: PS-OVERALL

**LEGEND**

- BUILDING
- PROPERTY LINE
- ROAD CENTERLINE
- CURB & GUTTER
- PARKING STRIPES
- STORM DRAIN MH
- SEWER MH
- WATER METER
- LIGHT POLE
- SURVEY MONUMENT
- AGREEMENT ON FILE **\*\*\***



PARKING LOT FOR APARTMENTS



REVISIONS	DATE	BY	COMMENTS

© 2010 Evergreen Engineering, Inc.

SURVEYED BY: GRW/ADM  
 DRAWN BY: ADM  
 CHECKED BY: GRW/ADM

**OVERALL EXISTING CONDITIONS  
 PROSPECTOR SQUARE, PARKING LOT J**

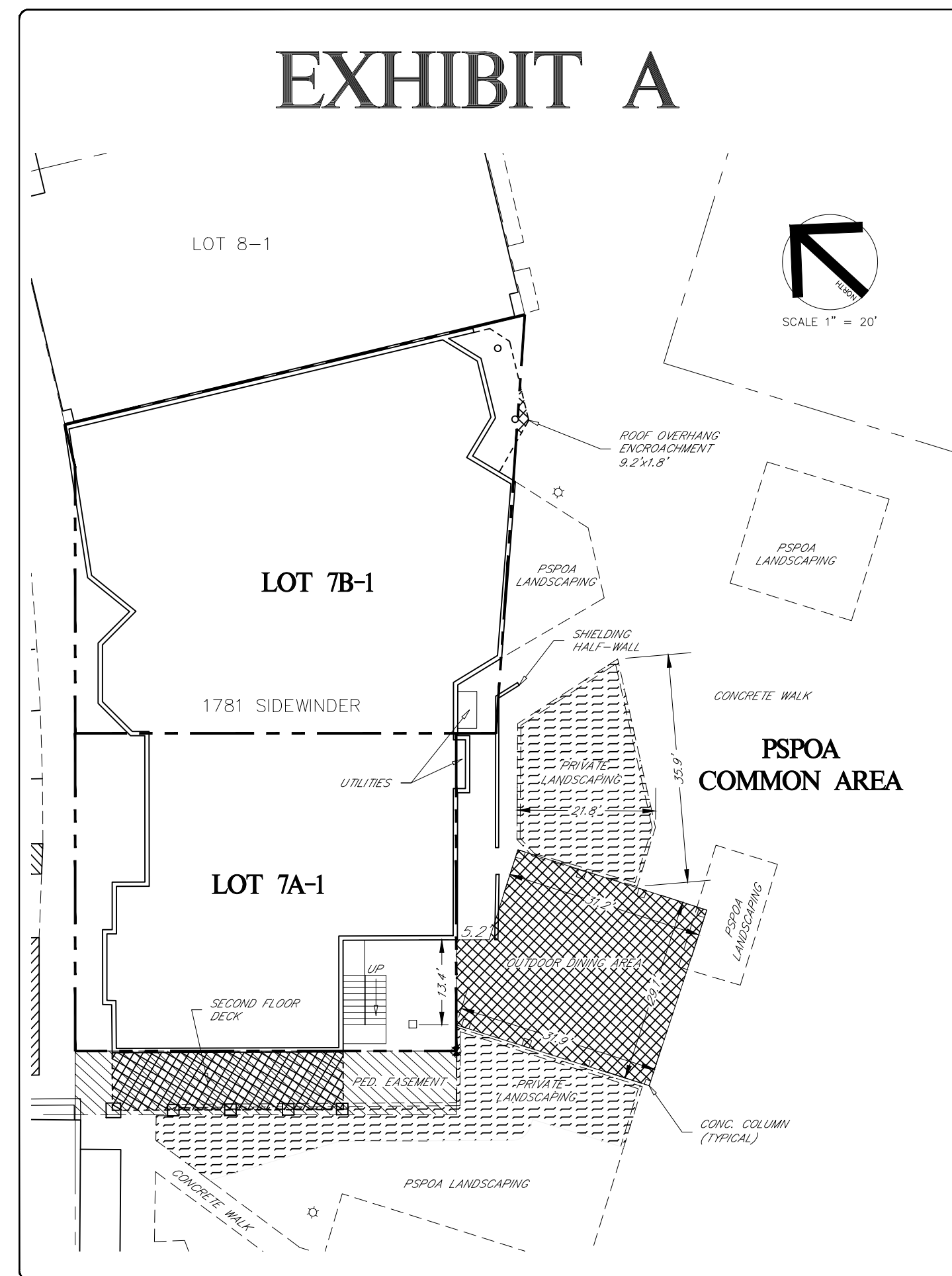
FOR: PS/OA

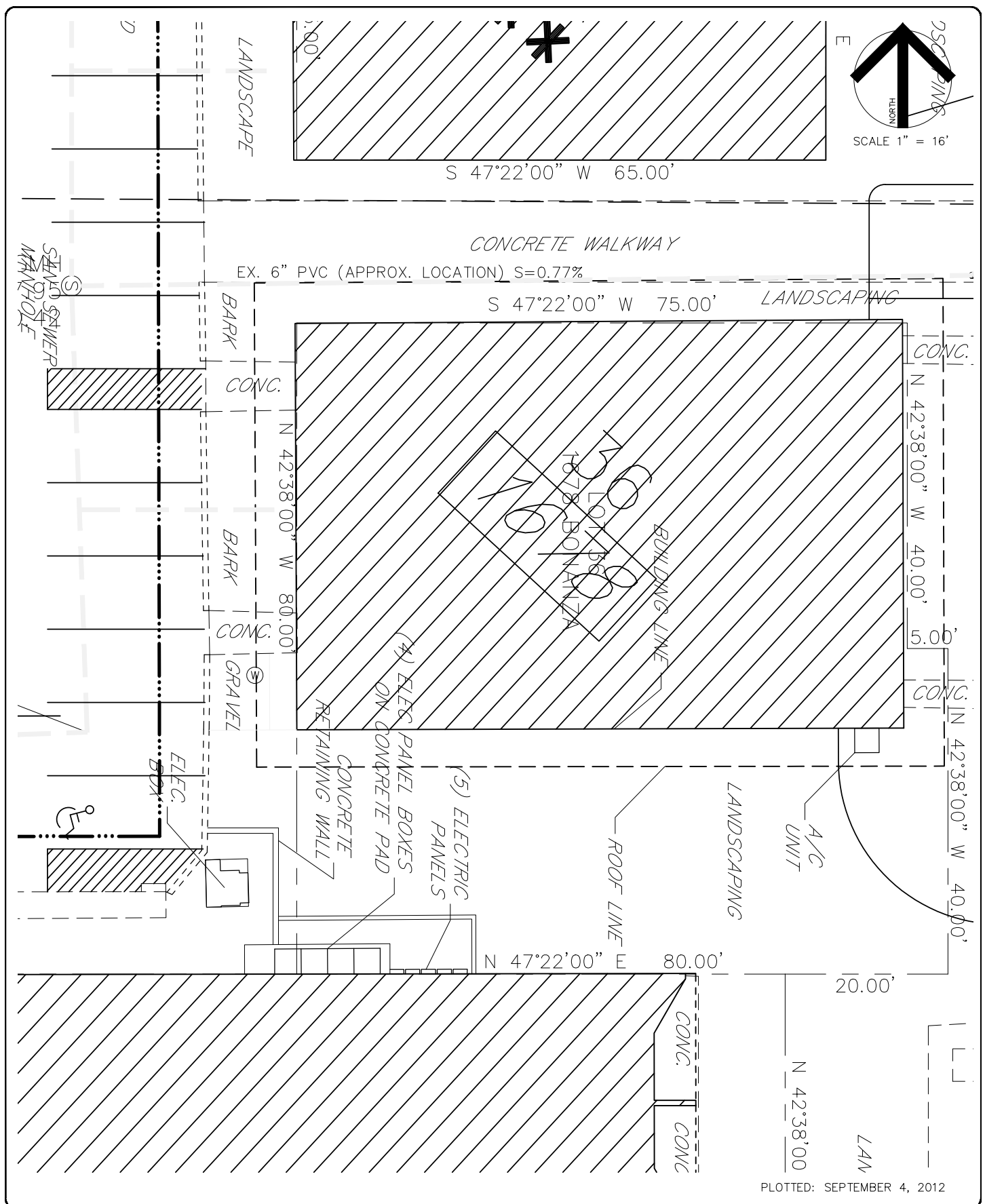
DWG: PS-OVERALL

JOB NO: 1002



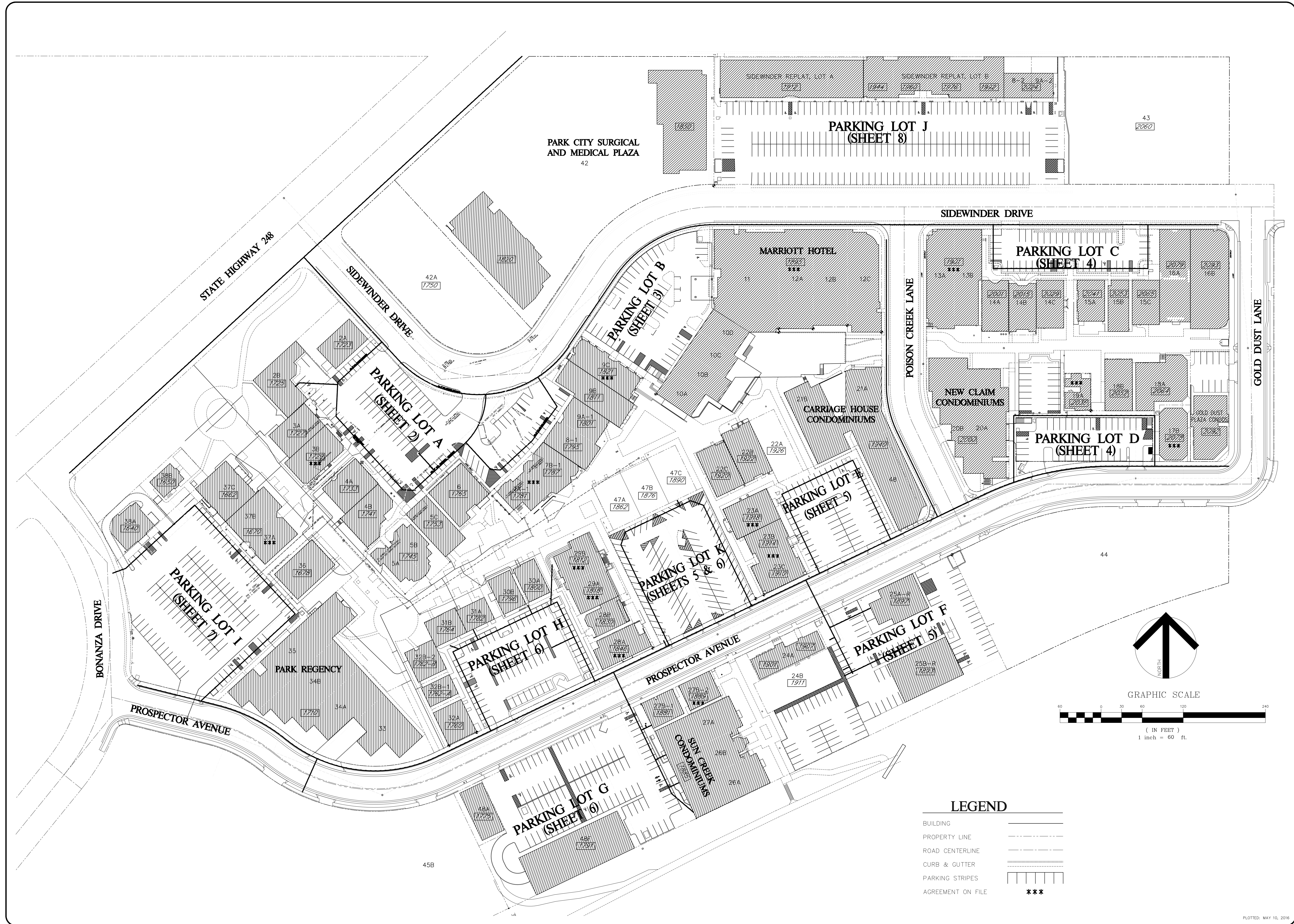
# EXHIBIT A





PLOTTED: SEPTEMBER 4, 2012

SHEET 1 OF 4	EXISTING CONDITIONS EXHIBIT		DATE: 09/04/12	SCALE: AS SHOWN
	PARK CITY CHIROPRACTIC / PARK REGENCY			
PREPARED BY: R. POA		DESIGNED BY: R. POA	CHECKED BY: R. POA	DATE: 09/04/12

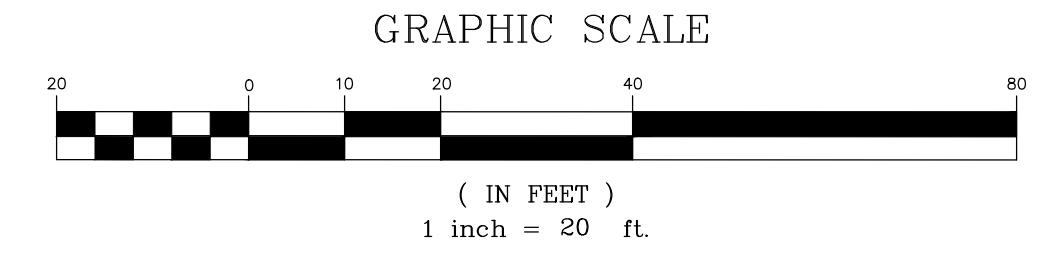
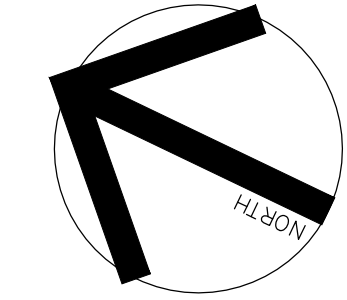
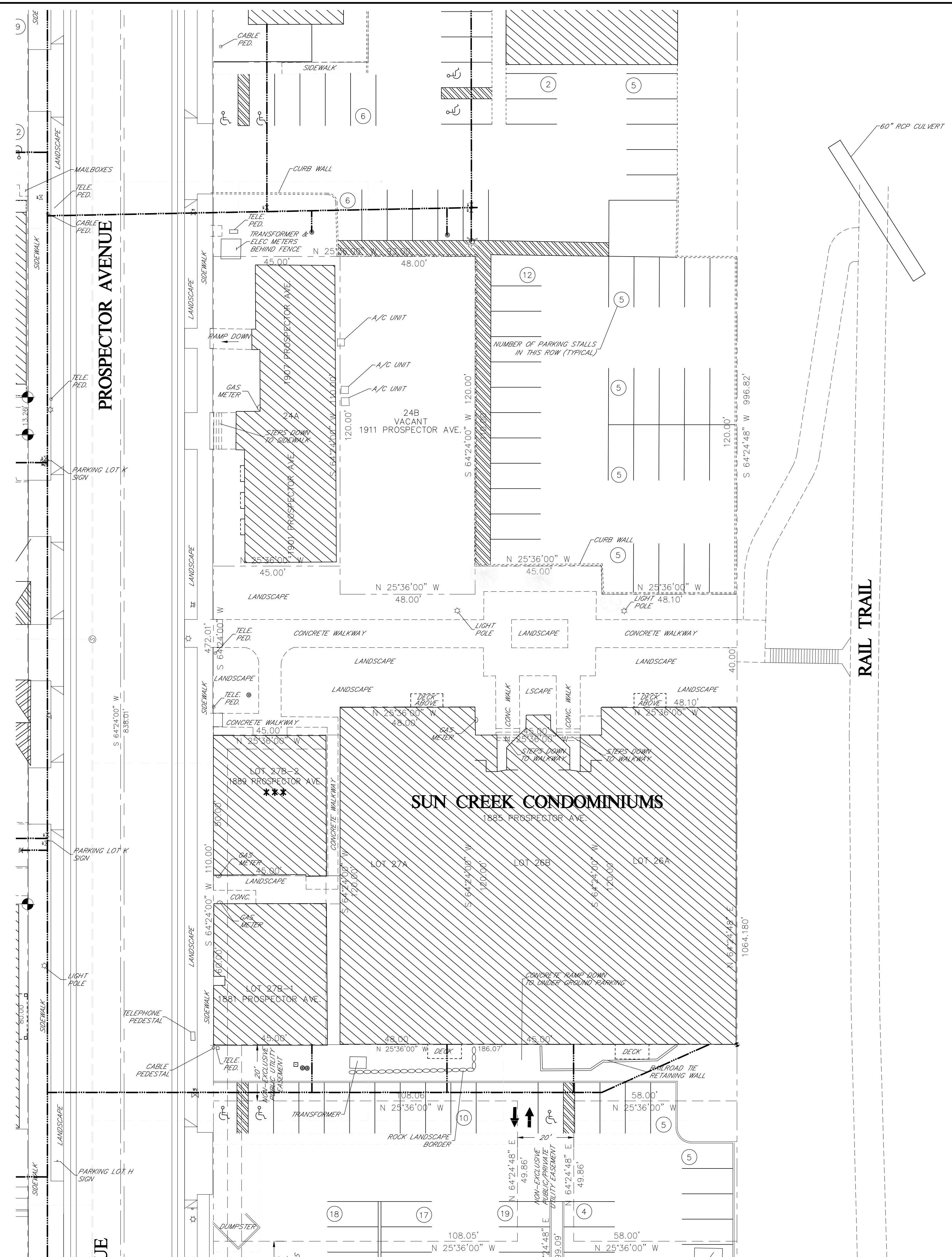


DATE	BY	COMMENTS
10.28.15	ADM	PARKING LOT F (REPLAT)

REVISIONS

SURVEYED BY:  
GRW/ADM  
 DRAWN BY:  
ADM  
 CHECKED BY:  
GRW/ADM

FOR: **PS/OA**  
 PS-OVERALL  
 JOB NO. 1002

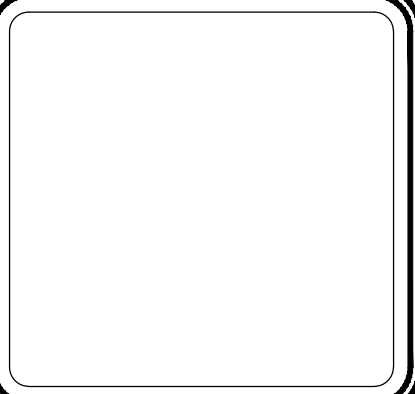


**LEGEND**

- BUILDING
- PROPERTY LINE
- ROAD CENTERLINE
- CURB & GUTTER
- PARKING STRIPES
- STORM DRAIN MH
- SEWER MH
- WATER METER
- LIGHT POLE
- SURVEY MONUMENT
- AGREEMENT ON FILE

**Evergreen Engineering, Inc.**  
 Civil Engineering • Land Surveying • Land Planning  
 1670 Bonanza Drive • Suite 104 • 84060  
 Park City, Utah • (435) 649-9219  
 Email: office@evergreen-eng.com

DATE	BY	COMMENTS



SURVEYED BY:  
GRW/ADM  
 DRAWN BY:  
ADM  
 CHECKED BY:  
GRW/ADM

**EXISTING CONDITIONS**  
**PROSPECTOR SQUARE, PARKING LOTS F & G**

FOR: **PSPOA**      DATE: **1002**  
 DRAWN BY: **PS-OVERALL**